

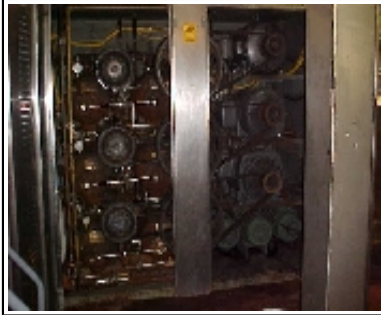
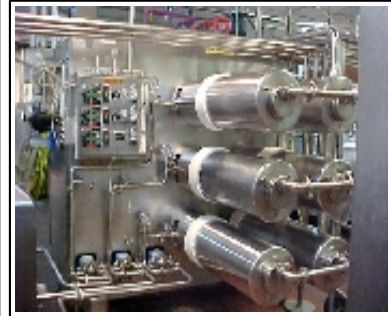
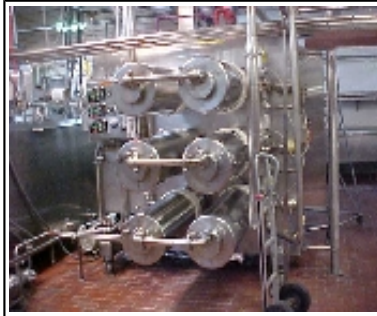


Remanufactured and
Reconditioned Equipment
New and Used parts

Martin Brothers, Incorporated
P.O. Box 639 3057 Cajun Drive
Winnsboro, LA 71295
1-800-652-2532
www.teammartinbrothers.com

1800 GPH Freezer, 6 Tubes, 3 Flavors

Item #	FR180033D180	Selling Price	\$134,000.00
---------------	--------------	----------------------	--------------



Totally remanufactured machine with rechromed freezing tube(s), new ammonia gauges, new bearings and seals all through; rebuilt pumps, rebuilt sanitary gauges, ammonia control valves and dasher. New blades, wiring and electrical controls. Variable frequency pump speed controls with forward mounted Nema 4 control panel in stainless enclosure. Remanufactured Nema 1 starter panel. Run tested through the starters and controls. Add \$1800.00 per refrigerant circuit for conversion to Freon. NA = NOT APPLICABLE

Manufacturer	Cherry Burrell	Cover	Stainless steel
Model Number	33D180	Bottom	Stainless steel
Serial Number	Per machine	Inlet	2 inch triclamp
Refrigerant	Ammonia	Outlet	2 inch triclamp
Heating	Hot gas	CIP Inlet	NA
HP	3 @ 31 1/2 each	Valve	NA
Drive	Belt	Number Tubes	6
GPH	1800	Size Tubes (in)	6x48
Agitator	Whipping dasher	Dumprail Ht (in)	NA
Speed (rpm)	1750 (motor)	Weight (lbs)	11,500
Elect Spec	220/440-3-60	Dimensions (in)	97Lx88Wx88H